

89441

Crystal Beaded, Three-Dimensional Embroidery with
Crystal Beaded Bodice on a Tulle Over Sparkle Tulle Ball Gown
with Detachable Long Sleeves.
Matching Stole

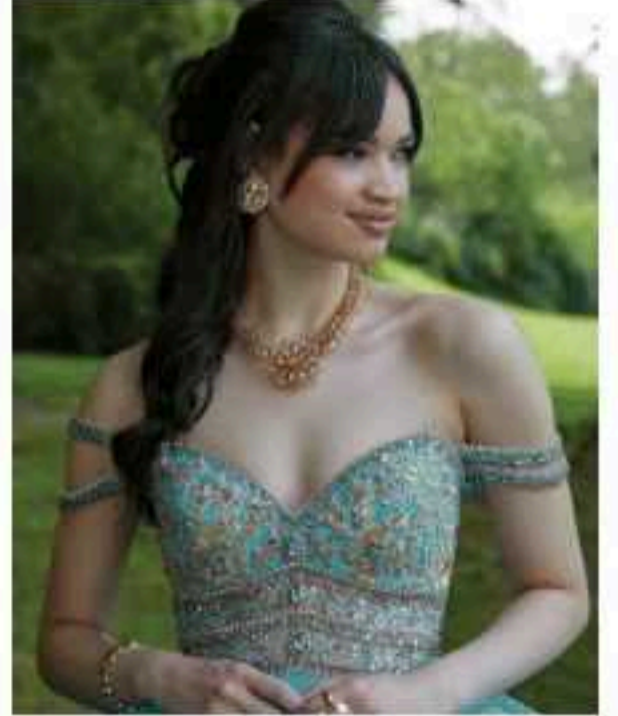
Colors:
Regal Royal/Gold
Magenta/Gold



89442

Crystal Beaded Embroidery with Rhinestone Trim
on a Tulle Over Sparkle Tulle Ball Gown with
Detachable Off-the-Shoulder Straps with Sheer Bodice
Matching Stole

Colors:
Blush/Gold
Emerald/Gold
French Blue/Gold



89443

Crystal Beaded, Three-Dimensional Floral Embroidery on a Tulle Over Sparkle Tulle Ball Gown with Detachable Long Puff Sleeves and Back Bow Matching Stole

Colors:
French Blue
Emerald
Blush
White





89443

Crystal Beaded,
Three-Dimensional Floral Embroidery
on a Tulle Over Sparkle Tulle Ball Gown
with Detachable Long Puff Sleeves and Back Bow
Matching Stole

Colors:
Blush
French Blue
Emerald
White

89444

Three-Dimensional Floral
Embroidery with Jeweled
Beading on a Sparkle Tulle Ball Gown
with Detachable Puff Sleeves and Back Bow
Matching Stole

Colors:
Aurora Blue
Sage Fairy
Blush



89445

Crystal Beaded, Three-Dimensional
Floral Embroidery on a Tulle Over
Sparkle Tulle Ball Gown with Sheer
Bodice and Detachable Back Bow
Matching Stole

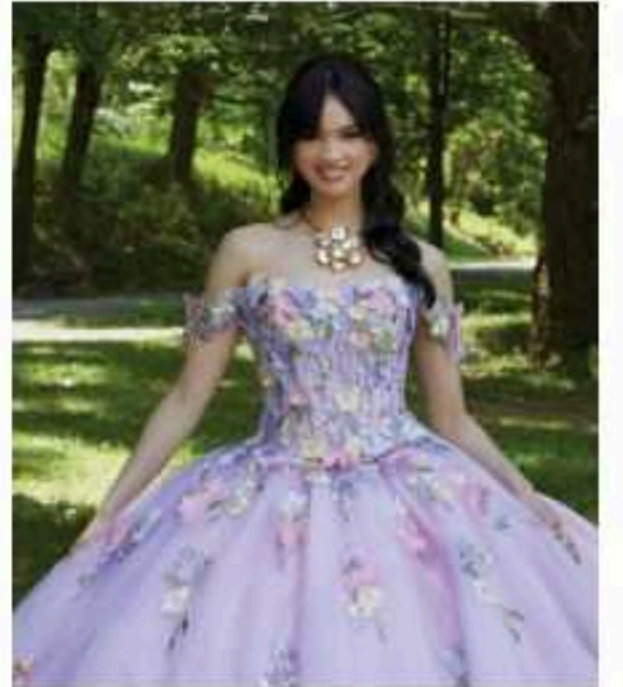
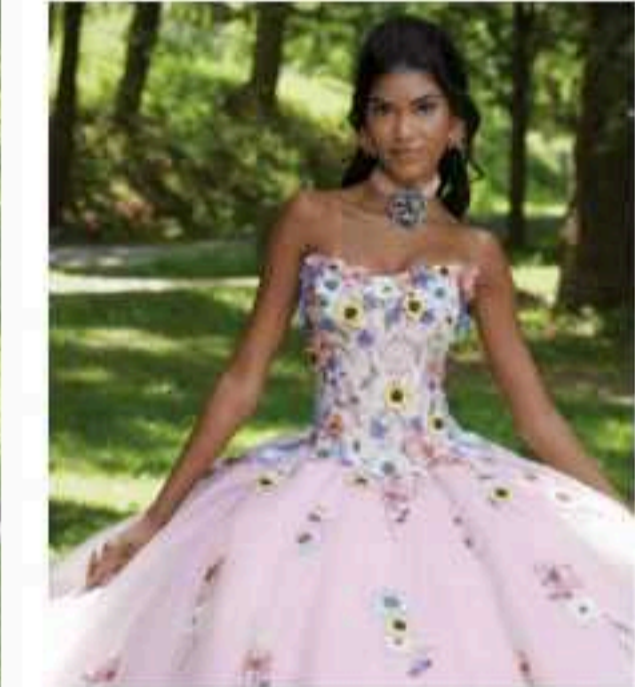
Colors:
Sage
Orchid
White



89446

Three-Dimensional Multicolored Embroidery
on a Tulle Over Sparkle Tulle Ball Gown
with Detachable Off-the-Shoulder Sleeves
Matching Stole

Colors:
Light Purple/Multi
Blush/Multi
Light Blue/Multi





89446

Three-Dimensional Multicolored Embroidery
on a Tulle Over Sparkle Tulle Ball Gown
with Detachable Off-the-Shoulder Sleeves
Matching Stole

Colors:
Light Purple/Multi
Blush/Multi
Light Blue/Multi

89447

Rhinestone and Crystal Beading on
a Textured Glitter Net Ball Gown with
Horsehair Edged Skirt Overlay and
Detachable Back Bow
Matching Stole

Colors:
Orchid
Blush
Sage



89447

Rhinestone and Crystal Beading on
a Textured Glitter Net Ball Gown with
Horsehair Edged Skirt Overlay and
Detachable Back Bow
Matching Stole

Colors:
Orchid
Blush
Sage





89448

Three-Dimensional Floral Embroidery with Crystal Beading on a Tulle Over Sparkle Tulle Ball Gown with Sheer Bodice and Detachable Off-the-Shoulder Sleeves and Back Bow Matching Stole

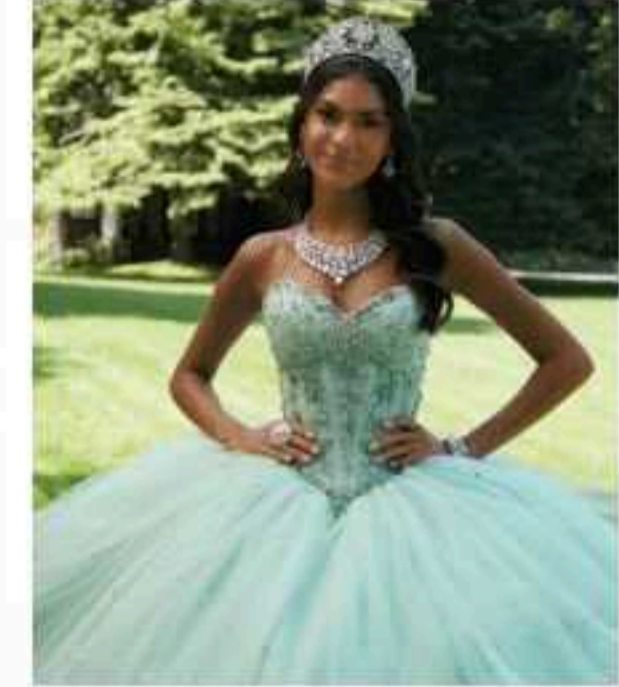
Colors:
Blue Raspberry
Watermelon



89449

Rhinestone and Crystal Beading on a Tulle Over Sparkle Tulle Ball Gown with Horsehair Edged Skirt Overlay and Detachable Off-the-Shoulder Sleeves and Back Bow Matching Stole

Colors:
Sage
Bubble
White





89450

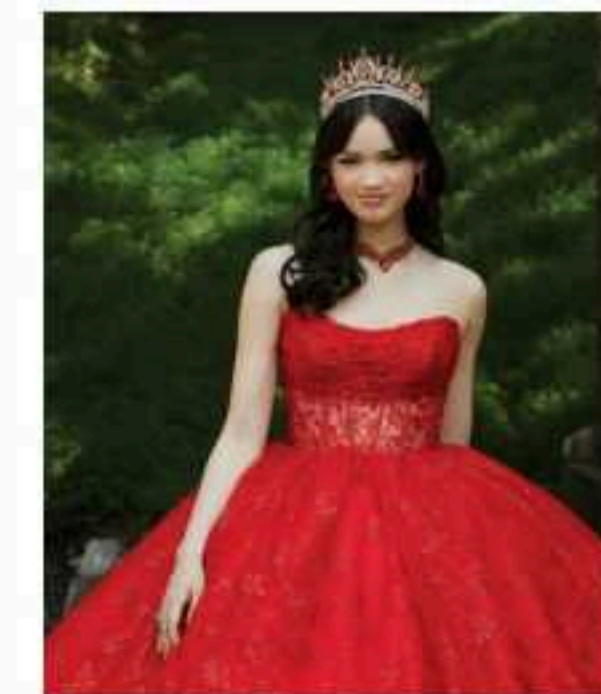
Crystal Beading on a Patterned
Glitter Tulle Over Sparkle Tulle Ball
Gown with Horsehair Edged Overlay
and Detachable Back Bow and
Sleeves with Sheer Bodice
Matching Stole

Colors:
Orchid
Red
Light Blue

89450

Crystal Beading on a Patterned
Glitter Tulle Over Sparkle Tulle Ball
Gown with Horsehair Edged Overlay
and Detachable Back Bow and
Sleeves with Sheer Bodice.
Matching Stole

Colors:
Orchid
Red
Light Blue



89451

Crystal Beaded Lace Appliqués
on a Tulle Over Sparkle Tulle Ball Gown
with Detachable Back Bow

Colors:
Scarlet
Regal Royal
Blush
White

Matching Capelet (Sold Separately as Style 89459)



89452

Crystal Beading on a Patterned
Glitter Tulle Ball Gown with Horsehair
Edged Skirt Overlay and Sheer Bodice
Matching Bolero Jacket

Colors:
Emerald/Gold
Sangria/Gold



89453

Jeweled Beading on a Tulle Over-
Sparkle Tulle Ball Gown with
Detachable Beaded Straps and Back Bow
Matching Stole

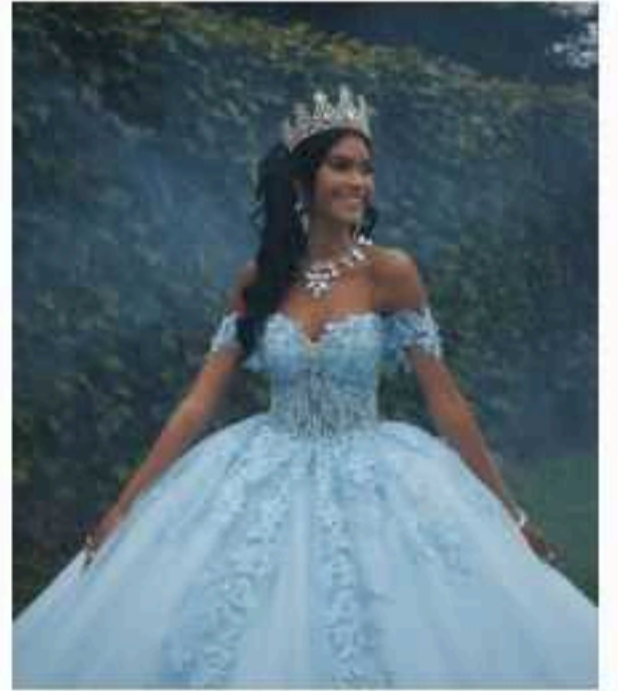
Colors:
Regal Royal
Scarlet



89454

Crystal Beaded Lace Appliqués on
a Tulle Over Sparkle Tulle Ball Gown
with Sheer Bodice and Detachable
Off-the-Shoulder Sleeves and Back Bow
Matching Stole

Colors:
Light Blue
Light Purple
Blush
White





89455

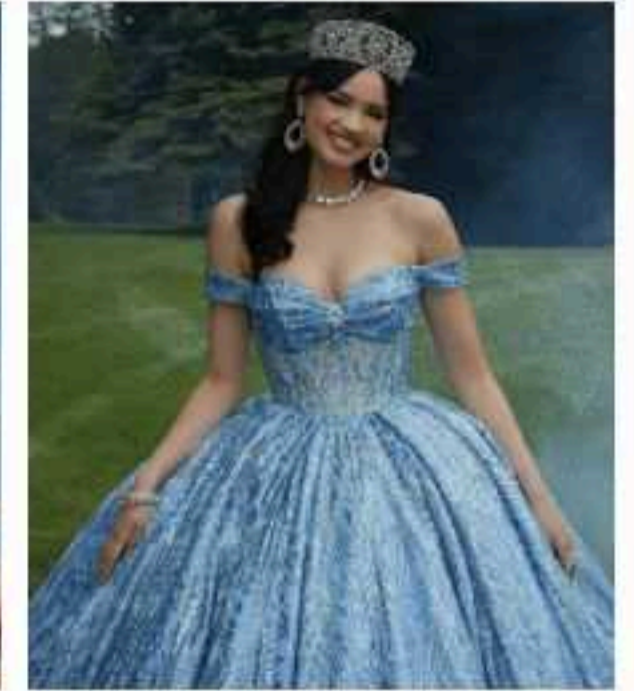
Jeweled Beading on a Patterned
Glitter Tulle Ball Gown with Sheer
Bodice and Detachable Back Bow
Matching Stole

Colors:
Berry
Gold
French Blue

89455

Jeweled Beading on a Patterned
Glitter Tulle Ball Gown with Sheer
Bodice and Detachable Back Bow
Matching Stole

Colors:
Berry
Gold
French Blue



89456

Crystal Beaded,
Three-Dimensional Floral
Embroidery on a Tulle Over Sparkle
Tulle Ball Gown with Sheer Bodice
and Detachable Back Bow
Matching Stole

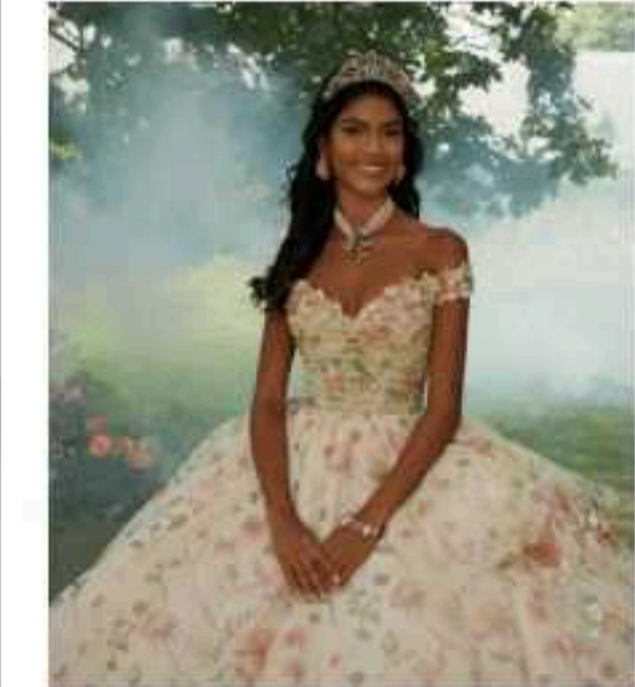
Colors:
Crimson
Cotton Candy



89457

Crystal Beaded,
Three-Dimensional Flowers
on a Floral Printed Tulle Over
Sparkle Tulle Waterfall Ball Gown
Matching Stole

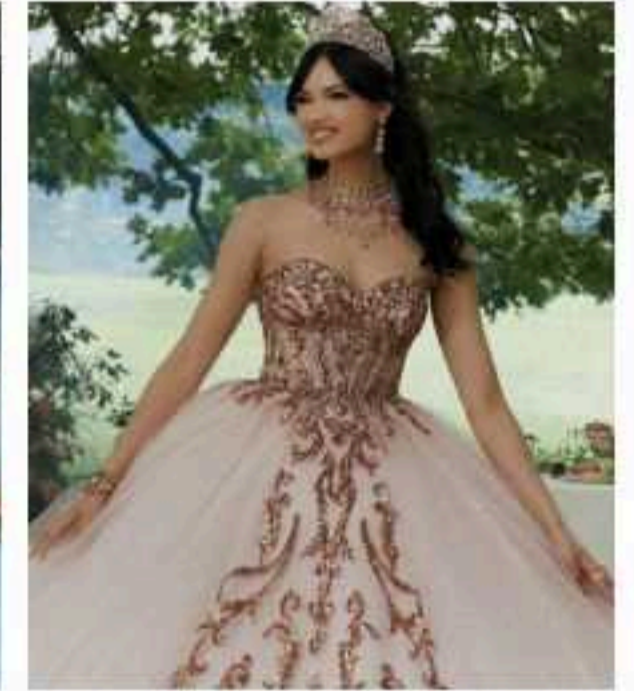
Colors:
Blush Floral
Sage Floral



89458

Patterned Sequins with Rhinestone and Crystal Beading on a Tulle Over Sparkle Tulle Ball Gown with Scalloped Train and Detachable Off-the-Shoulder Sleeves and BackBow
Matching Stole
Matching Capelet Available as Style 89460

Colors:
Bahama Blue/Gold
Blush/Rose Gold

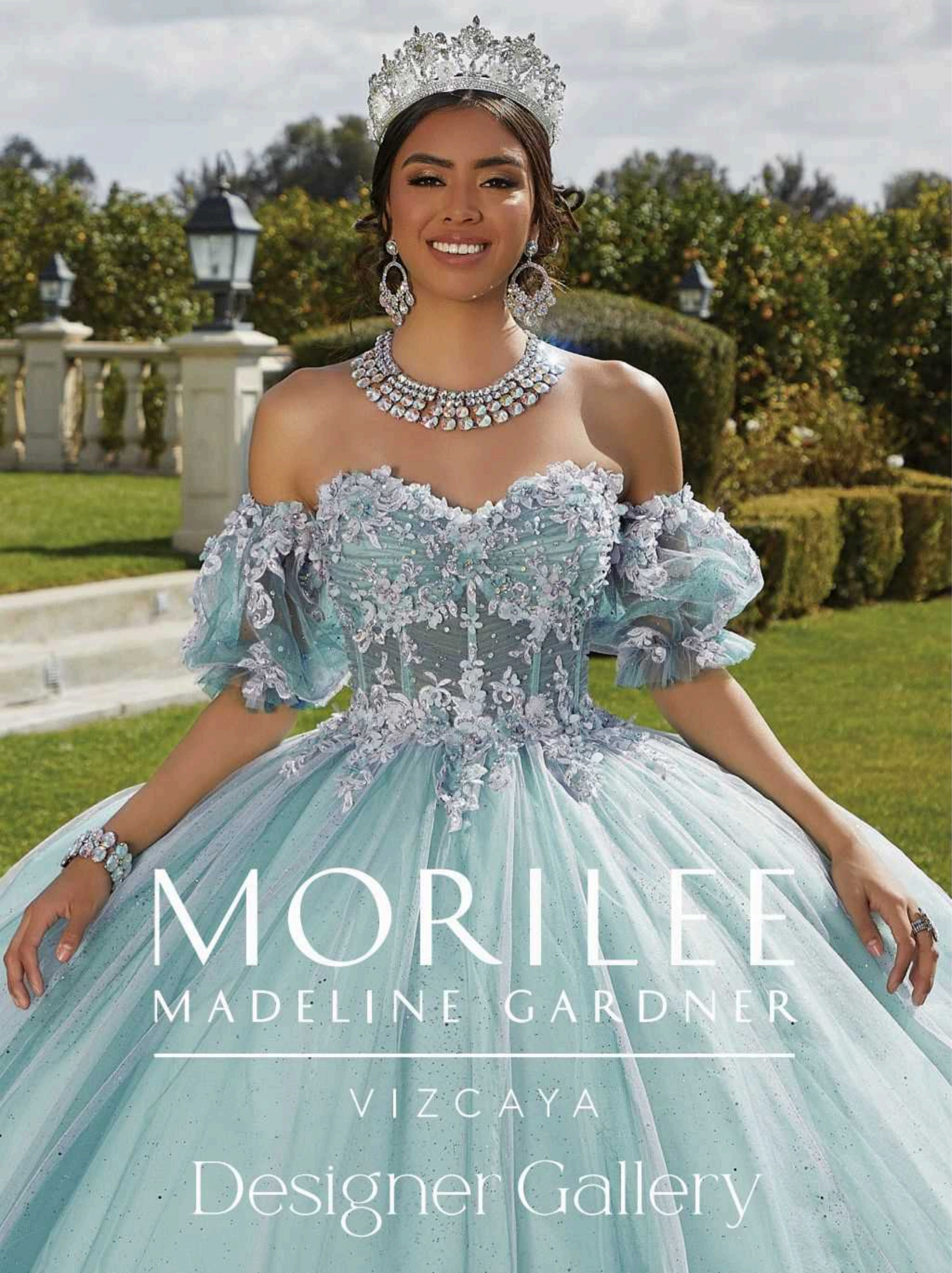




Matching Capelet to Style 89458
Sold Separately

89460





MORILEE
 MADELINE GARDNER
 VIZCAYA
 Designer Gallery

89135

Jeweled Beading on a Split Front Tulle Ball Gown Matching Stole

- Black Cherry
- Blush
- Sangria
- White
- Bahama Blue
- Royal



89186

Patterned Sequins on a Tulle Ball Gown with Detachable Sleeves Matching Stole

- Ivory/Blush
- Ivory/Bahama Blue
- Ivory/Nude
- White



89196

Contrasting Beaded Embroidery on a Tulle Ball Gown Matching Bolero Jacket

- Sangria
- Emerald
- Champagne/Nude



89199

Crystal Beading on a Floral Patterned, Glitter Tulle Ball Gown Matching Stole

- French Blue
- Rose Gold
- Champagne/Gold
- Purple/Gold
- Ivory/Silver
- Orchid



89241

Crystal Beading and Metallic Lace on a Tulle Ball Gown with Larissa Satin, Asymmetrical Overlay and Detachable Off-the-Shoulder Sleeves Matching Stole Removable Beaded Spaghetti Straps (Not Shown)

- Navy
- Wine
- Ivory



89248





Rhinestone and Crystal Beading on Three-Dimensional, Metallic Embroidery on a Tulle Ball Gown with Satin Overlay and Detachable, Long Sleeves Matching Stole Removable Beaded Spaghetti Straps (Not Shown)

- Black/Gold
- Sangria/Gold
- Blush/Rose Gold



89250

Crystal Beaded Lace Appliqués on a Tulle Over Chantilly Lace Ball Gown with Three-Dimensional Floral Skirt Appliqués and Appliqued Straps Matching Stole

-  Bahama Blue
-  Blush
-  Red
-  White



89255

Rhinestone and Crystal Beaded Trim on a Patterned Sequin, Box-Pleated, Sculptured Tulle Ball Gown with Flounced Tulle Train and Detachable Bell Sleeves Matching Stole

-  Rose Gold
-  Aqua
-  Red
-  Royal



89281

Rhinestone and Crystal Beaded Straps and Glitter Embroidery on a Tulle Over Sequined Lace Ball Gown Matching Stole

-  Bahama Blue
-  Blush/Nude
-  Light Purple



89282

Crystal Beaded, Three-Dimensional Floral Embroidery on a Layered Tulle Over Sparkle Tulle Ball Gown Matching Stole

-  Champagne/Blush
-  Orchid/Light Blue



89285

Crystal Beaded, Patterned Sequins and Embroidery on Net on a Larissa Satin Ball Gown with Sequined, Embroidered Net Skirt Panels and Larissa Satin Peplum Skirt Overlay with Detachable Puff Sleeves Matching Bolero Jacket

-  Royal
-  Blush/Rose Gold



89286

Crystal Beaded, Three-Dimensional Sequined Floral Embroidery on a Princess Tulle Ball Gown with Detachable Appliqued Straps Matching Bolero Jacket

-  Blush/Champagne
-  Royal
-  Sangria



89289

Crystal Beading and Three-Dimensional Floral Lace Appliqués on a Floral Patterned, Sequined Embroidery on a Tulle Ball Gown Matching Bolero Jacket

-  Champagne/Gold
-  Red



89297

Pearl and Crystal Beading on a Patterned Glitter Net Ball Gown with Three-Dimensional Floral Appliqués Matching Stole

-  Orchid
-  Rose Gold
-  Purple/Gold
-  Ivory/Silver



89301

Rhinestone and Crystal Beading with Three-Dimensional, Floral Embroidery on a Glitter Organza Ball Gown with Detachable, Floral Embroidered Sleeves Matching Stole

-  Gold
-  Blush



89303

Crystal Beading and Three-Dimensional Flowers on a Floral Patterned Glitter Net Over Glitter Tulle Ball Gown with Horsehair Edged Overskirt Matching Stole

-  Bahama Blue
-  Blush



89311

Rhinestone and Crystal Beaded, Metallic Lace Appliqués on a Tulle Over Sparkle Tulle Ball Gown with Detachable Back Bow Matching Bolero Jacket

-  Champagne/Gold
-  Emerald/Gold
-  Regal Royal/Gold



89313

Crystal Beading on a Floral Patterned, Glitter Tulle Ball Gown Matching Stole

-  Navy
-  Blush/Rose Gold



89316

Crystal Beaded,
Three-Dimensional Floral
Appliqués with Glitter Lace
on a Tulle Over Glitter Tulle
Ball Gown
Matching Stole

-  Blush
-  Champagne
-  Light Purple
-  Emerald
-  White



89318

Crystal Beaded,
Three-Dimensional Floral
Appliqués with Contrasting
Embroidery on a Princess
Tulle Over Glitter Tulle Ball
Gown
Matching Stole

-  Orchid
-  Champagne



89321

Rhinestone and Crystal
Beading on Sequined,
Embroidered Appliqués on a
Glitter Net Ball Gown with
Allover Embroidery Design and
Detachable Fly-Away Sleeves
Matching Stole

-  Blush
-  Burgundy



89323

Rhinestone and Crystal
Beaded, Metallic Embroidery
with Three-Dimensional
Floral Appliqués on a Tulle
Over Metallic Patterned Tulle
Ball Gown with Detachable
Off-the-Shoulder Sleeves
Matching Stole

-  Blush/Gold
-  Champagne/
Gold
-  Light Blue/
Silver
-  White/Silver



89324



Crystal Beading on
Contrasting Lace Appliqués on
a Tulle Over Glitter Tulle Ball
Gown with Scalloped Edging
Matching Stole

-  French Blue/
Gold
-  Sangria/Gold
-  Champagne/
Blush
-  Emerald/Gold



89331

Crystal Beaded Embroidery
with Three-Dimensional
Flowers and Iridescent
Overskirt on a Tulle Ball
Gown with Appliqués
Matching Shawl

-  Blush
-  Blue Sky



89333

Caviar and Crystal Beaded
Appliqués with
Three-Dimensional
Appliqués and Flounce
Neckline on a Tulle Over
Glitter Net Ball Gown

-  Rose Blossom



89334

Jeweled Beading on a
Crystalized Tulle, Pleated Ball
Gown with Feather Edged
Detachable Long Sleeves

-  Lilac
-  Blush
-  Pearl



89335

Crystal Beading on Metallic
Embroidered Appliqués with
Beaded Three-Dimensional
Flowers on a Glitter Pattern
Ball Gown
Matching Shawl

-  Violet
-  Champagne/
Gold
-  Scarlet



89336

Crystal Beaded Lace
Appliqués on a Horseshair
Edged, Flounced Tulle
Ball Gown
Matching Shawl

-  Yellow
-  Bubble
-  Orchid



89337

Crystal Beading on
Embroidery with
Three-Dimensional Flowers
on a Tulle Ball Gown Over
Diamanti Satin
Matching Shawl

-  Scarlet
-  Bahama Blue



89338

Sparkling Contrasting
Appliqués with Crystal
Beading on Double Tiered
and Scalloped Overskirt onto
a Tulle Ball Gown
Matching Shawl

-  Sugar Plum



89339

Crystal Beaded, Lace Appliqués and Three-Dimensional Lace Details on Tulle Over Glitter Net Ball Gown Matching Shawl

-  Blush
-  Aqua
-  White



89340


Crystal Beaded Embroidery with Jeweled Edging with Scalloped Overskirt on a Tulle Over Sparkle Net Ball Gown with a Detachable Back Bow Matching Shawl

-  Blush
-  Orchid
-  Scarlet
-  White



89341

Multi-Colored, Three-Dimensional Crystal Beaded Flowers on Tulle Over Crystalized Tulle Ball Gown with Scattered Jeweled Stones Matching Shawl

-  Champagne Garden
-  Pansy Garden



89342

Gold Edged, Embroidered Appliqués with Crystal Beading on a Flounced Neckline and Pleated Tulle Ball Gown Over Crystalized Tulle Matching Shawl

-  Sangria/Gold
-  Emerald/Gold
-  Blush/Gold



89343

Jeweled Beading on Three-Dimensional Flowers on an Allover Sparkling, Glitter Tulle, Pleated Ball Gown with Detachable Beaded Capelet Matching Shawl

-  Royal
-  Emerald
-  Scarlet



89344

Crystal Beaded Appliqués on Floral, Sequined Patterned Tulle Over Larissa Satin with a Pleated Ball Gown Skirt Matching Shawl

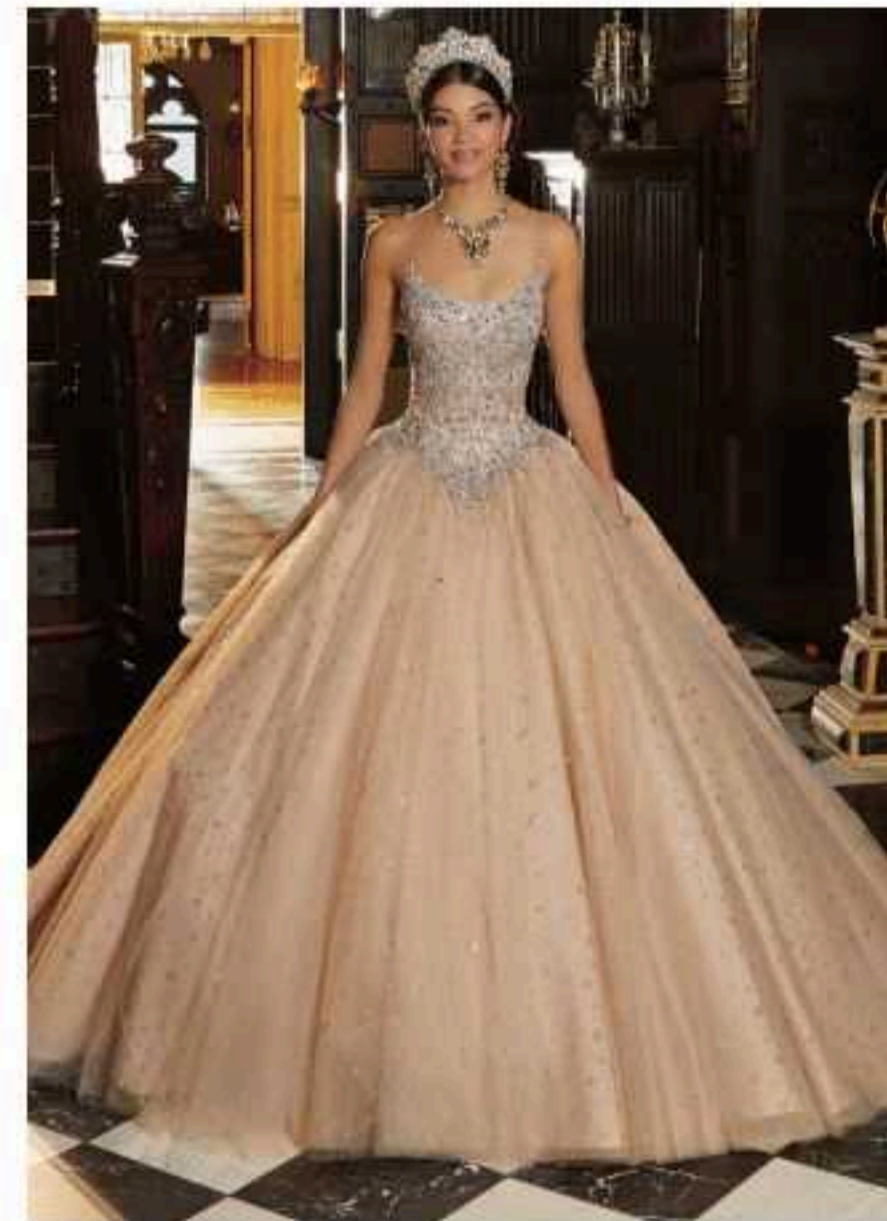
-  Royal
-  Emerald
-  Peony Pink



89345

Jeweled Beaded and Embroidered Bodice on Tulle over Metallic Net Ball Gown Matching Bolero

-  Nude/Gold
-  Emerald
-  Scarlet



89346

Sparkling Allover Pattern with Sequined Appliqués and Jeweled Tapered Straps on a Tulle over Glitter Net Patterned Ball Gown Skirt with Split-Front, Horsehair Edged Overskirt and Detachable Off-the-Shoulder Sleeves

-  Gold
-  Red



89347

Crystal Beaded, Gold Appliqués on Gold Glitter Patterned Tulle Ball Gown with Contrasting Lining Detachable Glitter Patterned Tulle Cape

-  Champagne/Black/Gold
-  Orchid/Black/Gold



89351

Crystal Beading on Metallic Lace Appliqués on a Patterned Sparkle Tulle Ball Gown with Light Up Detail Matching Stole

-  Emerald
-  Sangria
-  Blush



89352



Crystal Beading on Glitter Embroidery on a Tulle Over Sparkle Tulle Ball Gown with Flounced Overskirt and Detachable Long Sleeves Matching Stole

-  Sangria/Gold
-  Orchid
-  Emerald



89353

Crystal Beading on Three-Dimensional Floral Appliqués on a Patterned Glitter Tulle Over Sparkle Tulle Ball Gown with Detachable Long Puff Sleeves Matching Stole

-  French Blue
-  Emerald



89354

Crystal Beaded, Sparkle Lace Appliqués on a Sparkle Tulle Ball Gown with Detachable Puff Sleeves with Bow Detail Matching Stole

-  Yellow
-  French Blue
-  Blush
-  Orchid
-  Mint
-  White



89355

Crystal Beading on a Patterned Glitter Net Ball Gown Matching Shawl

-  Blush/Rose Gold
-  Sangria/Gold



89356



Rhinestone and Crystal Beaded Embroidery on an Organza Over Sparkle Tulle Ball Gown with Flounced Overskirt Matching Shawl

-  Orchid
-  Emerald
-  Blush



89357

Rhinestone and Crystal Beaded Embroidery on a Patterned Glitter Tulle Ball Gown with Detachable Cape Matching Shawl

-  French Blue
-  Blush/Rose Gold



89358

Crystal Beaded, Three-Dimensional Floral Lace Appliqués on a Floral Patterned Glitter Net Ball Gown with Flounced Back Skirt and Light Up Detail Matching Shawl

-  French Blue
-  Champagne/Gold
-  Scarlet



89359

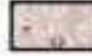



Rhinestone Beaded Lace Appliqués with Corset Bodice Detail on a Tulle Over Sparkle Tulle Ball Gown with Detachable Bishop Sleeves Matching Stole

-  Scarlet
-  Blush
-  Light Blue
-  Mint



89360

Crystal Beaded Trim with Beaded Lace Appliqués on a Tulle Over Sparkle Tulle Ball Gown Matching Shawl

-  Blush
-  Regal Royal
-  Scarlet
-  White



89361

Crystal Beaded, Metallic Lace Appliqués on a Patterned Sparkle Tulle Ball Gown with Overskirt and Detachable Puff Sleeves Matching Stole

-  Wine
-  Rose Gold



89362

Crystal Beaded, Three-Dimensional Floral Appliqués on Metallic Embroidery on a Tulle Over Glitter Tulle Ball Gown with Detachable Cape Matching Shawl

-  Emerald
-  Wine



89363

Rhinestone and Crystal Beaded Lace Appliqués on Patterned Glitter Net Bodice on a Paneled, Patterned Glitter Tulle Mixed with Sparkle Tulle Ball Gown Matching Stole

-  Sangria
-  Emerald



89364

Crystal Beaded, Sequined Embroidered Appliqués on a Glitter Tulle Ball Gown with Flounced Overskirt Matching Stole

-  Navy/Light Blue
-  Scarlet



89365

Contrasting Beading and Embroidery on a Tulle Over Sparkle Tulle Ball Gown Matching Stole

-  Light Blue/Royal
-  Dusty Rose/Wine
-  Champagne/Blush



89366

Rhinestone and Crystal Beading with Three-Dimensional Floral Embroidery on an Allover Sequined, Embroidered Net Ball Gown with Detachable Bishop Sleeves Matching Stole

-  Light Blue
-  Blush



89401



Crystal Beading on Ombre Patterned Sequins on a Tulle Over Glitter Tulle Ball Gown with Detachable Bell Sleeves and Back Bow Matching Bolero Jacket

-  Silver Rose
-  Silver Sage



89402

Rhinestone and Crystal Beading on a Tulle Over Sparkle Tulle Ball Gown with Horsehair Edged, Flounced Overskirt and Detachable Off-the-Shoulder Sleeves Matching Stole

-  Blush/Rose Gold
-  Emerald/Gold



89403

Crystal Beaded Lace Appliqués and Three-Dimensional Flowers on a Tulle Over Sparkle Tulle Ball Gown with Floral Skirt Matching Stole

-  Mint
-  Lilac
-  Pink
-  White



89404

Rhinestone and Crystal Beaded Embroidery with Three-Dimensional Butterflies on a Tulle Over Sparkle Tulle Ball Gown with Detachable Back Bow Matching Stole

-  Pucker Up Pink
-  Nude/Gold
-  White



89405

Crystal Beaded, Contrasting Floral Embroidery on a Patterned Glitter Tulle Ball Gown Matching Stole

-  Blush
-  Light Blue
-  Orchid



89406

Crystal Beaded Embroidery with Rhinestone Trim on a Glitter Net Bodice and Overskirt on a Ruffled Tulle Ball Gown Matching Bolero Jacket

-  French Blue
-  Blush



89407

Crystal Beaded Lace Appliqués on Chantilly Lace Bodice Meets the Princess Tulle Over Sparkle Tulle Ball Gown Skirt with Detachable Puff Sleeves

-  Bright Mint
-  Bahama Blue
-  Scarlet
-  White



89408

Two-Piece; Three-Dimensional Floral Lace Appliqués on Tulle Over Sparkle Tulle Mini Dress with Full Tulle Over Sparkle Tulle Ball Gown Skirt Matching Stole

-  Pucker Up Pink
-  Aqua
-  Orchid



89409

Crystal Beaded, Three-Dimensional Floral Lace Appliqués on a Tulle Over Glitter Tulle Ball Gown with Flounced Overskirt and Horsehair Edging

-  Light Blue
-  Light Purple



89410


Rhinestone and Crystal Beaded Embroidery on a Ruffled Tulle Ball Gown with Removable, Sparkle Tie Bow Shoulder Straps Matching Stole

-  Emerald
-  French Blue
-  Orchid
-  Sage



89411

Crystal Beaded Lace Appliqués on a Patterned Glitter Tulle Ball Gown with Detachable Bishop Sleeves

-  French Blue
-  Emerald
-  Blush/Rose Gold



89412

Crystal Beaded, Contrasting Three-Dimensional Sequined Appliqués on a Floral Patterned Glitter Tulle Over Sparkle Tulle Ball Gown with Horsehair Edged Overskirt and Matching Stole

-  Sangria/Gold
-  Emerald/Gold



89413





Confetti Beading on a Tulle Over Glitter Tulle Ball Gown with Satin Corset Trim and Detachable Puff Sleeves and Back Bow

-  Black/Multi



89414

Crystal Beaded, Metallic Embroidery with Three-Dimensional Butterflies on a Princess Tulle Over Sparkle Tulle Ball Gown with Horsehair Edging Matching Stole

-  French Blue
-  Orchid
-  Blush
-  White



89415

Crystal Beaded, Contrasting Ombre Embroidery on a Glitter Tulle Ball Gown with Detachable Ruched Sleeves and Back Bow

-  Black/Blue
-  Black/Pink



89416

Rhinestone and Crystal Beading on Metallic Embroidery on a Patterned Glitter Tulle Ball Gown with Horsehair Edged Overskirt and Detachable Bell Sleeves and Back Bow

-  French Blue
-  Blush/Rose
-  Gold



89421

Crystal Beaded, Three-Dimensional Floral Appliqués with Metallic Embroidery on a Layered Glitter Tulle Ball Gown with Detachable Puff Sleeves Matching Stole

-  Lavender Moss
-  Sangria/Blush
-  Blueberry Pop



89422

Crystal Beaded, Embroidered Lace Appliqués on Chantilly Lace Bodice Meets the Tulle Over Sparkle Tulle Ball Gown with Detachable Off-the-Shoulder Sleeves Matching Stole

-  Orchid
-  Bahama Blue
-  Champagne
-  White



89423

Crystal Beaded, Embroidered Lace Appliqués on a Printed Tulle Ball Gown with Detachable Puff Sleeves Matching Stole

-  Wine Garden
-  Orchid Garden



89424



Contrasting Three-Dimensional Floral Embroidery with Crystal Beading on a Tulle Over Sparkle Tulle Ball Gown Matching Stole

-  Sage/Multi
-  Blush/Multi



89425

Three-Dimensional Floral Appliqués with Crystal Beading on a Patterned Sequined Tulle Over Sparkle Tulle Ball Gown with Detachable Back Bow Matching Stole

-  Pink
-  Aqua



89426

Jeweled Beading on a Tulle Over Glitter Tulle Ball Gown with Detachable Puff Sleeves Matching Stole

-  Orchid
-  Navy
-  French Blue



89427

Rhinestone and Crystal Beaded Embroidery on a Tulle Over Glitter Tulle Ball Gown with Scalped Train and Detachable Off-the-Shoulder Sleeves Matching Stole

-  Royal/Light Blue
-  Blue Orchid
-  Scarlet/Champagne



89428

Crystal Beaded Lace Appliqués on Chantilly Lace Bodice Meets the Detachable, Patterned Glitter Tulle Ball Gown Skirt Matching Bolero Jacket

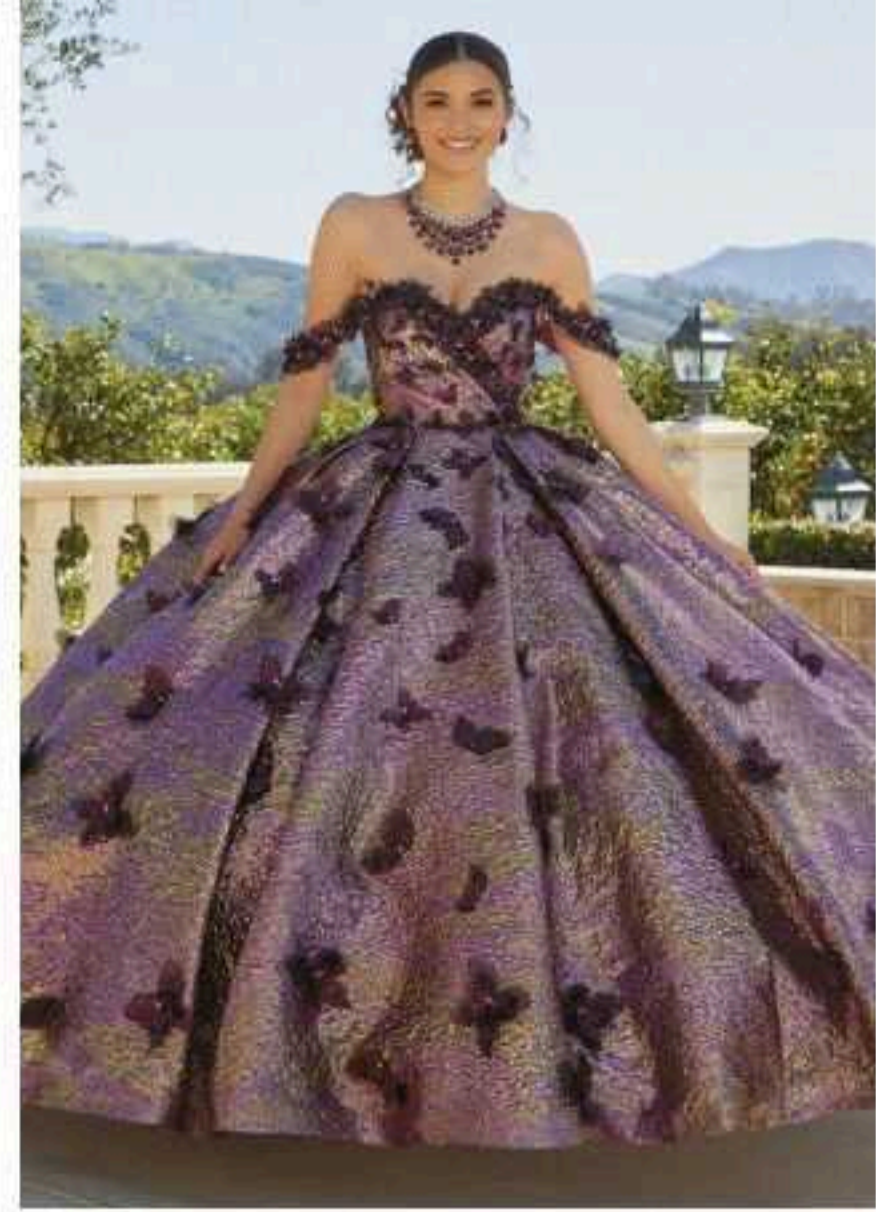
-  Regal Royal
-  Red
-  Gold



89429

Three-Dimensional Flowers and Butterflies with Crystal Beading on a Metallic Brocade Ball Gown Matching Stole

-  Purple/Gold
-  Rose Gold



89430

Rhinestone and Crystal Beading on a Tulle Over Patterned Glitter Tulle Ball Gown with Detachable Off-the-Shoulder Sleeves and Back Bow Matching Stole

-  Pucker Up Pink
-  Nude
-  Light Blue



89431

Butterfly Neckline with Rhinestone and Crystal Beading on a Patterned Glitter Tulle Ball Gown with Lace Overskirt Trim and Detachable Back Bow Matching Stole

-  Red
-  Gold



89432


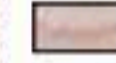
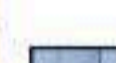
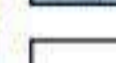
Three-Dimensional Floral Lace Appliqués with Crystal Beading on a Tulle Over Sparkle Tulle Ball Gown with Scalloped Train Matching Stole

-  White
-  Blush/Dusty Rose
-  Light Blue



89433

Crystal Beaded, Floral Embroidery on Chantilly Lace Bodice Meets the Glitter Tulle Ball Gown Skirt with Rosette Skirt Detail and Detachable Rosette Sleeves Matching Stole

-  Scarlet
-  Champagne/Blush
-  Bahama Blue
-  White



89434

Rhinestone and Crystal Beaded Glitter Lace Appliqués on a Tulle Over Glitter Tulle Ball Gown with Detachable Collar and Puff Sleeves

-  Sage
-  Blush



89435

Crystal Beaded, Contrasting Embroidery on a Tulle Ball Gown Matching Bolero Jacket

-  Black/Multi
-  Pink Ivy
-  French Blue/Multi



89436

Crystal Beaded, Three-Dimensional Floral Appliqués on Metallic Brocade with Detachable Puff Sleeves Matching Stole

-  Metallic Pink
-  Metallic Gold



89437

Crystal Beaded, Three-Dimensional Floral Appliqués with Chantilly Lace on a Tulle Ball Gown Matching Stole

-  Sage/Lilac
-  French Blue/Pink
-  Champagne/Blush



89438

All-over Crystal Beaded Bodice on a Ruffled Tulle Ball Gown Skirt with Detachable Off-the-Shoulder Sleeves Matching Stole

-  Blush/Purple Ombre
-  Sage/Emerald Ombre
-  Blush
-  White





MORILEE

MADELINE GARDNER

VALENCIA

60191

Three-Dimensional Ombré
Flowers with Crystal Beading on
a Tulle Over Sparkle Tulle Ball
Gown with Detachable
Off-the-Shoulder Sleeves
Matching Stole

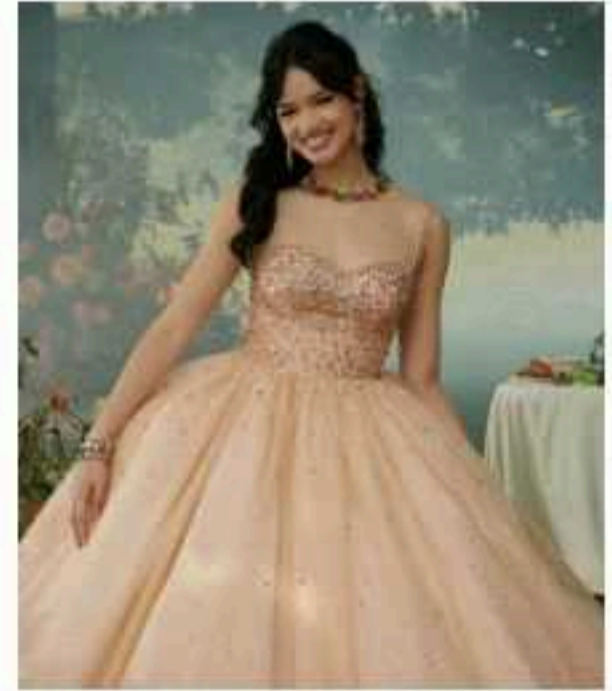
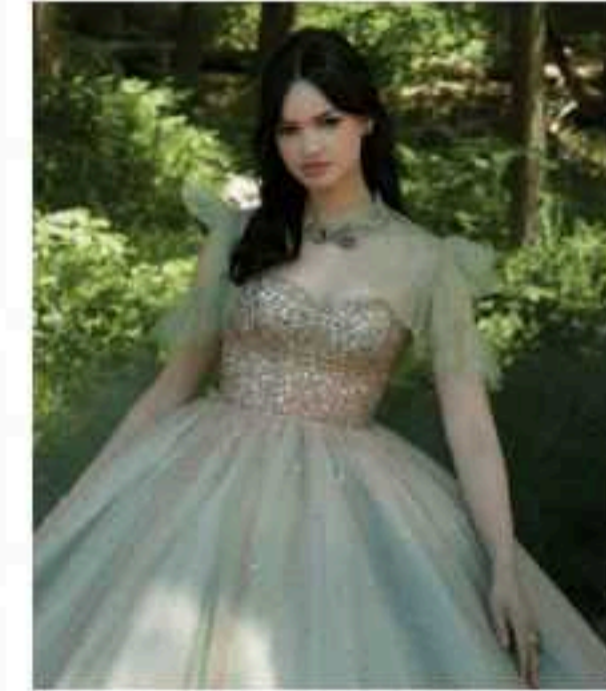
Colors:
Cherry Blossom
Blue Bella



60192

Candy Jeweled Beading with
Rhinestone Trim on a Patterned
Glitter Tulle Ball Gown with
Sheer Bodice
Matching Bolero Jacket

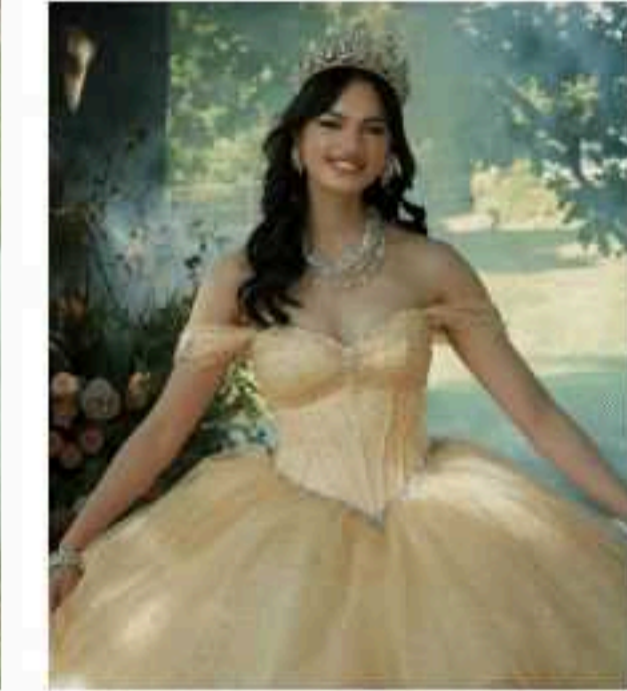
Colors:
Butterscotch Candy
Watermelon Candy



60193

Rhinestone and Crystal Beading on a Patterned Glitter Tulle Ball Gown with Horsehair Edged Overskirt and Detachable Off-the-Shoulder Sleeves and Back Bow. Matching Stole.

Colors:
Gold
Sage

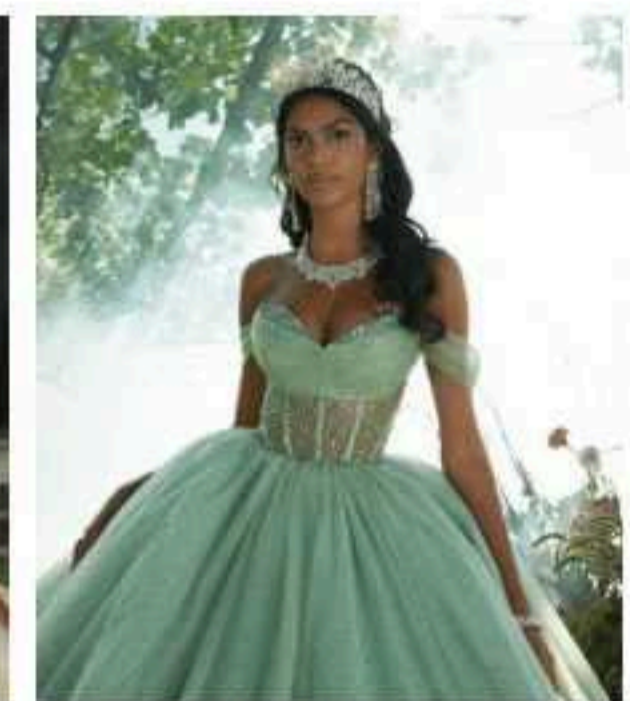
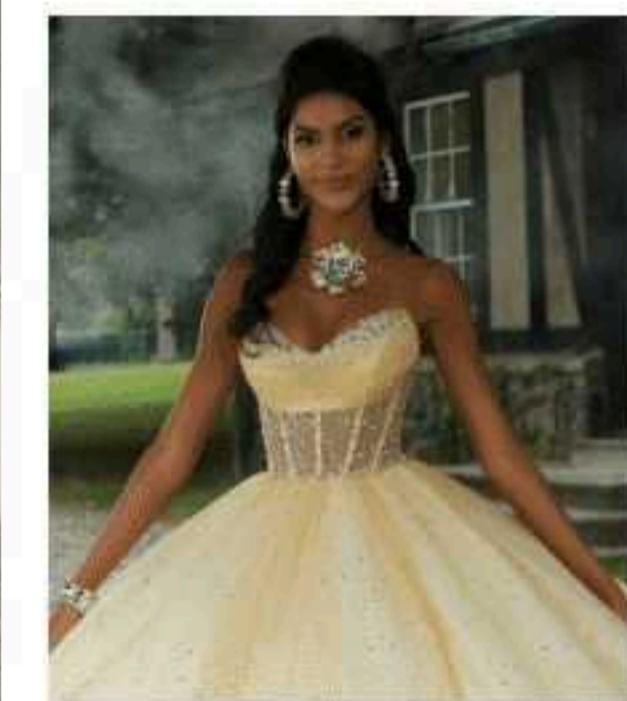




60194

Jeweled Beading on a Patterned
Glitter Tulle Ball Gown with
Sheer Bodice and Detachable
Off-the-Shoulder Sleeves
Matching Stole

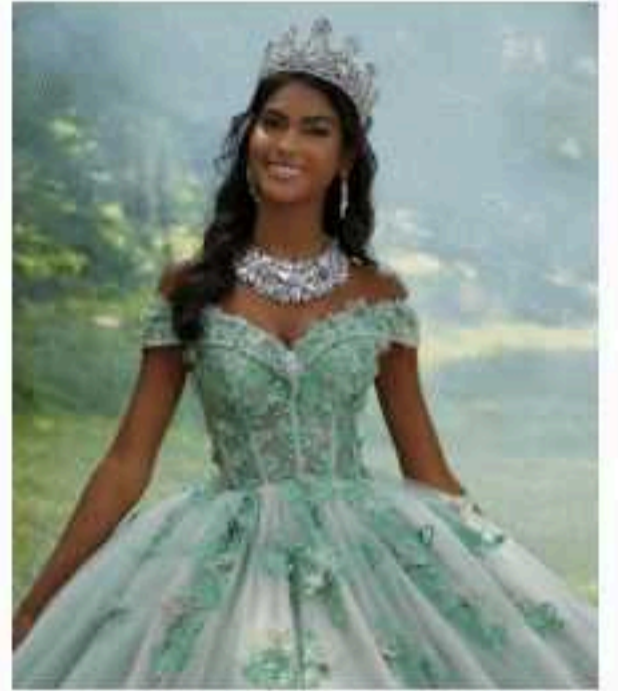
Colors:
Sage
Gold
Blush



60195

Three-Dimensional Floral Embroidery with Rhinestone and Crystal Beading on a Tulle Over Sparkle Tulle Ball Gown with Sheer Bodice Matching Stole

Colors:
Orchid
Sage/Petal
Blush



60196

Three-Dimensional Flowers on
a Pleated Shimmer Ball Gown
Matching Stole

Colors:
Shimmer Rose
Shimmer Wine

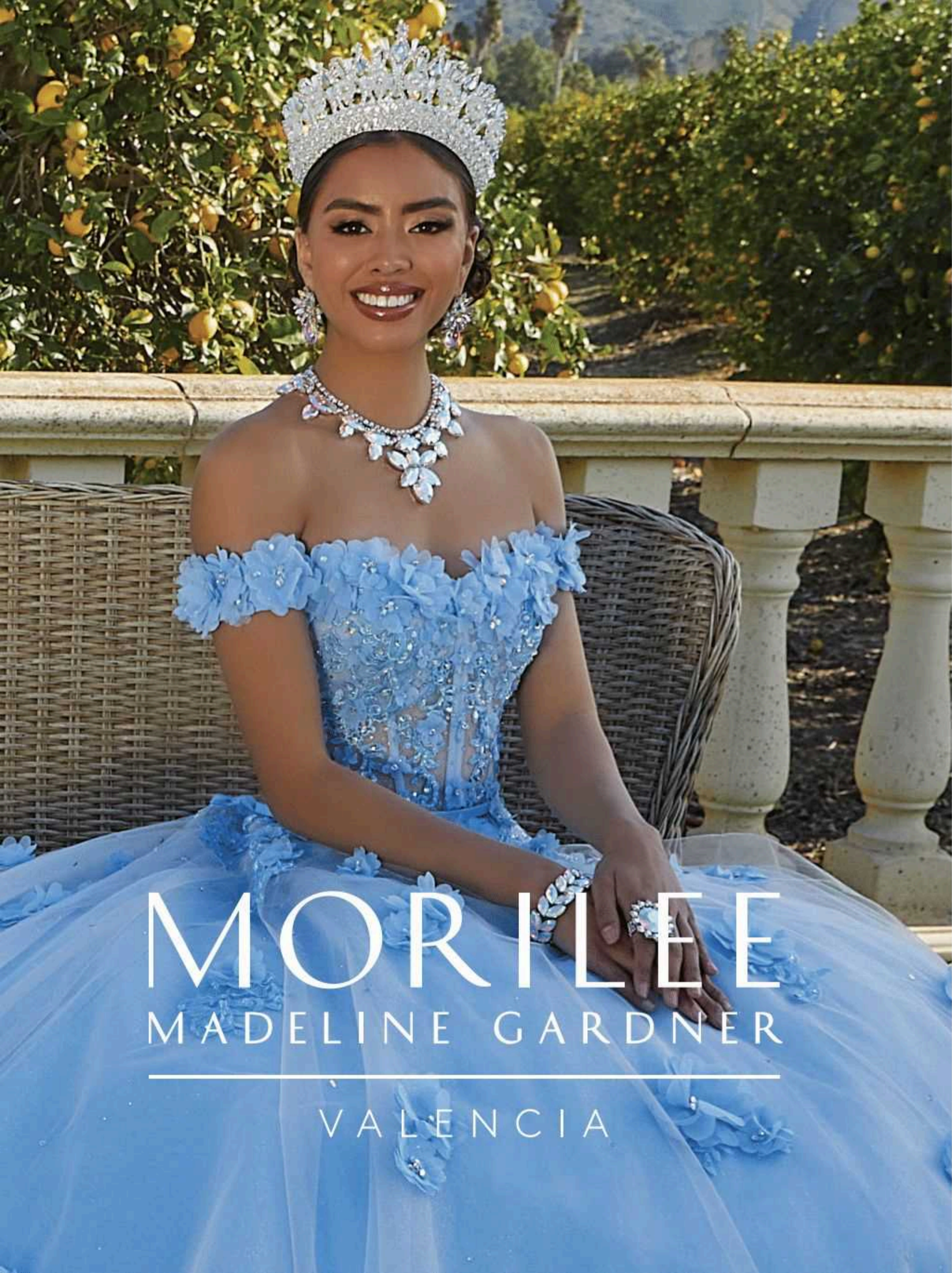


60197

Crystal Beaded,
Three-Dimensional Floral Lace
on a Tulle Over Sparkle Tulle Ball
Gown with Sheer Bodice and
Detachable Back Bow
Matching Bolero Jacket!

Colors:
Bubble/Multi
Black





MORILEE

MADLINE GARDNER

VALENCIA

60015

Beaded Lace on a Princess Tulle Ball Gown

- Bahama Blue
- Blush
- White



60033

Crystal Beaded Lace Appliqués on a Tulle Ball Gown Matching Stole

- Light Purple
- Blush
- Champagne
- White



60071

Crystal Beaded, Three-Dimensional Floral Appliqués and Embroidery on a Tulle Ball Gown with Detachable Off-The-Shoulder Sleeves Matching Stole

- Champagne / Blush
- Ivory / Light Blue



60110

Patterned Sequin Bodice and Hemline on a Tulle Over Glitter Tulle Ball Gown with Detachable Bell Sleeves Matching Stole

- Sangria
- Royal
- Blush



60123

Crystal Beaded, Three-Dimensional Floral Neckline Trim and Straps with Floral Patterned, Contrasting Embroidery on a Tulle Over Glitter Tulle Ball Gown Matching Stole

- Champagne
- Blush
- French Blue



60124

Rhinestone and Crystal Beaded, Floral Glitter Embroidery and Metallic Lace Appliqués on a Tulle Over Sparkle Tulle Ball Gown Matching Stole

- Champagne / Blush
- Champagne / Bahama Blue
- Champagne / Light Purple



60128


Patterned Sequins on a Tulle Over Sparkle Tulle Ball Gown with Peplum Skirt Overlay Matching Stole

-  Blush/Rose Gold
-  Sangria
-  Regal Royal



60132

Rhinestone and Crystal Beading with Metallic Embroidered Appliqués on a Tulle Over Sparkle Tulle Ball Gown with Sequined, Floral Glitter Pattern and Scalloped Hemline Matching Stole

-  Wine/Gold



60133

Crystal Beading and Three-Dimensional, Floral Embroidery on a Tulle Over Glitter Tulle Ball Gown with Horsehair Edging Matching Bolero Jacket

-  Wine
-  Bright Royal



60142



Rhinestone and Crystal Beaded Embroidery on a Tulle Over Metallic Printed Tulle Ball Gown Matching Bolero Jacket

-  Light Blue
-  Orchid
-  Emerald/Gold
-  White



60143

Crystal Beaded, Three-Dimensional Floral Appliqués with Beaded Lace on a Tulle Over Sparkle Tulle Ball Gown with Detachable Angel Sleeves Matching Stole

-  Light Pink
-  Light Blue



60146

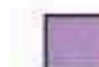


Crystal Beaded, Metallic Lace Appliqués on a Tulle Over Sparkle Tulle Ball Gown Matching Stole

-  Pink
-  Wine



60152

Sparkling Appliqués with Crystal Beading on a Tulle Over Metallic Net Ball Gown with Detachable Off-The-Shoulder Sleeves Matching Shawl

-  Orchid
-  Blush
-  French Blue



60153

Diamanti Satin Ball Gown with Crystal Beaded, Embroidered Appliqués and Three-Dimensional Flowers

-  Ivory/Blush
-  Blush



60155

Crystal Beaded, Floral Lace with Three-Dimensional Appliqués on a Tulle over Glitter Net Ball Gown with Jeweled Chandelier Straps Matching Shawl

-  Champagne/Nude
-  Emerald
-  Bahama Blue



60156

Sequined Appliqués and Scattered Crystal Beading on a Tulle Over Crystallized Net Ball Gown with Cascading Overskirt and Bell Sleeves

-  Sangria
-  Champagne/Gold
-  Ocean Blue



60161



Crystal Beaded Lace Appliqués on a Flounced Tulle Over Sparkle Tulle Ball Gown

-  Black/Nude
-  Orchid/Nude
-  Emerald/Nude
-  Scarlet/Nude
-  White



60162

Crystal Beading on Three-Dimensional Floral Lace Appliqués on a Patterned Glitter Tulle Over Sparkle Tulle Ball Gown Matching Bolero Jacket

-  Emerald
-  Sangria



60163

Crystal Beaded Embroidery on a Patterned Glitter Tulle Ball Gown
Matching Bolero Jacket

-  Regal Royal
-  Gold



60164

Rhinestone and Crystal Beaded Embroidery on a Glitter Tulle Ball Gown with Detachable Puff Sleeves
Matching Stole

-  Champagne
-  Blush
-  Light Purple
-  White



60165


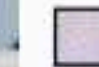
Crystal Beaded, Three-Dimensional Floral Sparkle Appliqués on a Sparkle Tulle Ball Gown
Matching Stole

-  Light Blue
-  Yellow
-  Bubble



60166

Crystal Beaded, Glitter Embroidery on a Glitter Tulle Ball Gown
Matching Stole

-  Sangria
-  Orchid



60171

Allover Sequined Velvet Ball Gown with Satin Boned Bodice and Detachable Puff Sleeves

-  Wine
-  Emerald
-  Black



60172




Crystal Beaded, Sequined Appliqués on a Tulle Over Sparkle Tulle Ball Gown with Flounced Overskirt and Detachable Long Puff Sleeves with Matching Choker and Detachable Back Bow

-  Orchid
-  Scarlet



60173

Crystal Beaded Straps and Bodice Trim on a Diamantina Satin Box-Pleated Ball Gown with Detachable Back Bow
Matching Stole

-  Royal
-  Red
-  Blush



60174

Crystal Beaded, Three-Dimensional Floral Appliqués on a Glitter Tulle Ball Gown with Detachable Princess Sleeves and Back Bow

-  Lavender Moss
-  Blue Orchid



60175

Rhinestone and Crystal Beading on a Sparkle Tulle Ball Gown with Detachable Back Bow
Matching Bolero Jacket

-  Lipstick
-  Rose Quartz
-  Regal Royal
-  White



60176

Crystal Beaded, Contrasting Floral Embroidery on a Tulle Over Glitter Tulle Ball Gown
Matching Stole

-  Sage Garden
-  Orchid Garden



60177




Crystal Beaded Neckline Trim and Beaded Fringe Sleeves on an Allover Sequined Velvet Ball Gown with Satin Boned Bodice

-  Emerald
-  Wine



60181

Three-Dimensional Floral Glitter Embroidery with Crystal Beading on a Tulle Over Glitter Tulle Ball Gown with Detachable Off-the-Shoulder Sleeves
Matching Stole

-  Blush/Rose Gold
-  Emerald
-  Bahama Blue



60182

*Crystal Beaded,
Three-Dimensional Floral
Appliqués on a Printed Tulle
Ball Gown
Matching Stole*

-  Orchid Garden
-  French Blue Garden



60183

*Crystal Beaded,
Three-Dimensional Floral
Appliqués on Chantilly Lace
Bodice Meets the Tulle
Over Glitter Tulle Ball Gown
Skirt with Detachable
Off-the-Shoulder Sleeves*

-  Sage
-  Blush
-  Bahama Blue
-  White



60184

*Jeweled Beading on a Layered
Tulle Over Glitter Tulle Ball
Gown Skirt with Detachable
Off-the-Shoulder Sleeves
Matching Stole*

-  Sangria/
Emerald
-  Sage/Orchid
-  Champagne/
Blush
-  Sangria/Blush
-  White



60185

*Three-Dimensional Floral
Embroidery with Crystal
Beading on a Tulle Over
Sparkle Tulle Ball Gown
Matching Stole*

-  Blush/Champagne
-  Sangria/Blush
-  Bahama Blue/Blush



60186

*Crystal Beading and
Three-Dimensional Floral
Appliqués
on an Organza Ball Gown
with Detachable Floral Sleeves
Matching Stole*

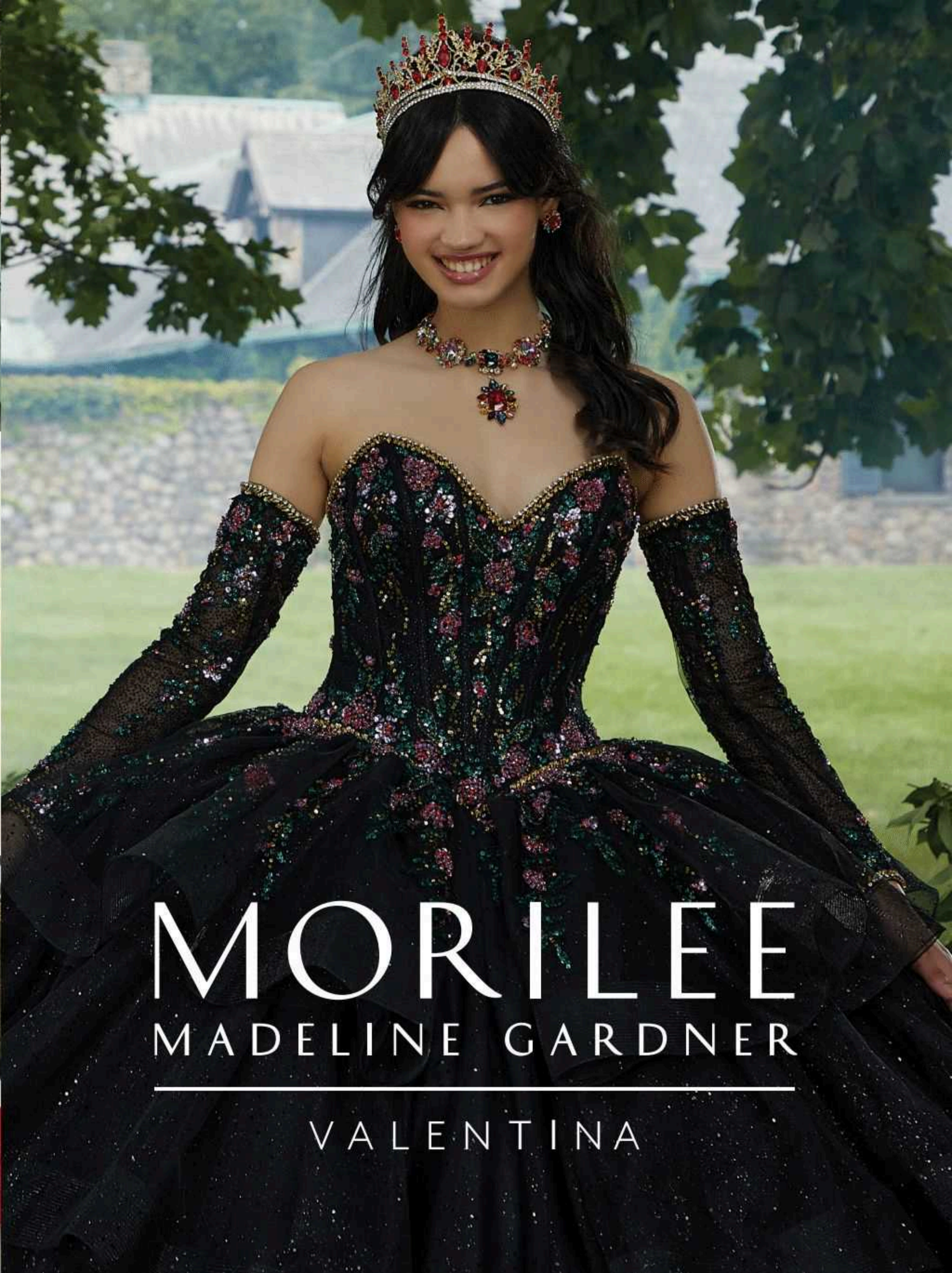
-  Lilac/Pink
-  Bahama Blue/
Light Blue
-  White



60187

*Butterfly Bodice with Rhine-
stone and Crystal Beading
on a Glitter Tulle Ball Gown
with Detachable Back Bows
Matching Bolero Jacket*

-  Scarlet
-  Orchid
-  Emerald



MORILEE
MADELINE GARDNER

VALENTINA

34101

Rhinestone Beading with Floral
Organza Embroidery on a Tulle
Over Sparkle Tulle Ball Gown
with Detachable Back Bow
Matching Stole

Colors:
Orchid
Pucker Up Pink



34102

Three-Dimensional Floral Embroidery with Crystal Beading on a Foil Printed Tulle Ball Gown with Sheer Bodice and Detachable Back Bow and Matching Stole

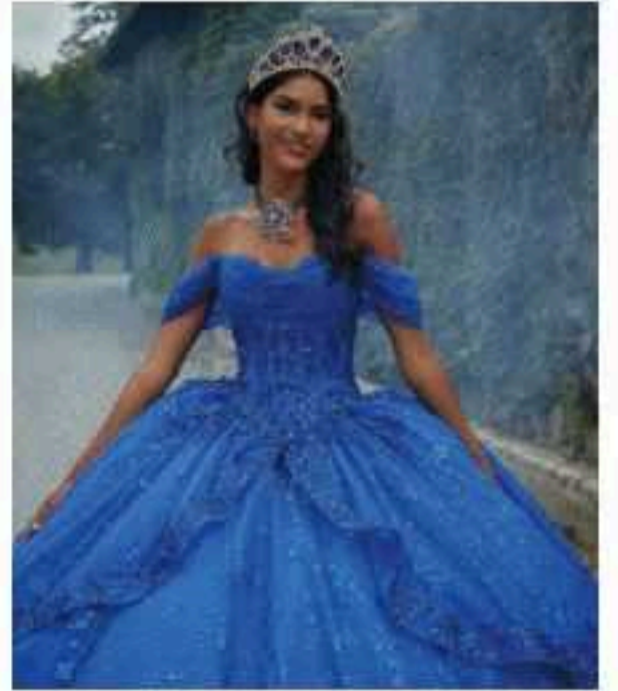
Colors:
White/Silver
Blush



34103

Crystal Beading on Patterned Sequins with Embroidery on a Patterned Glitter Tulle Ball Gown with Horsehair Edged Skirt Overlay and Detachable Off-the-Shoulder Sleeves Matching Stole

Colors:
Red
Regal Royal

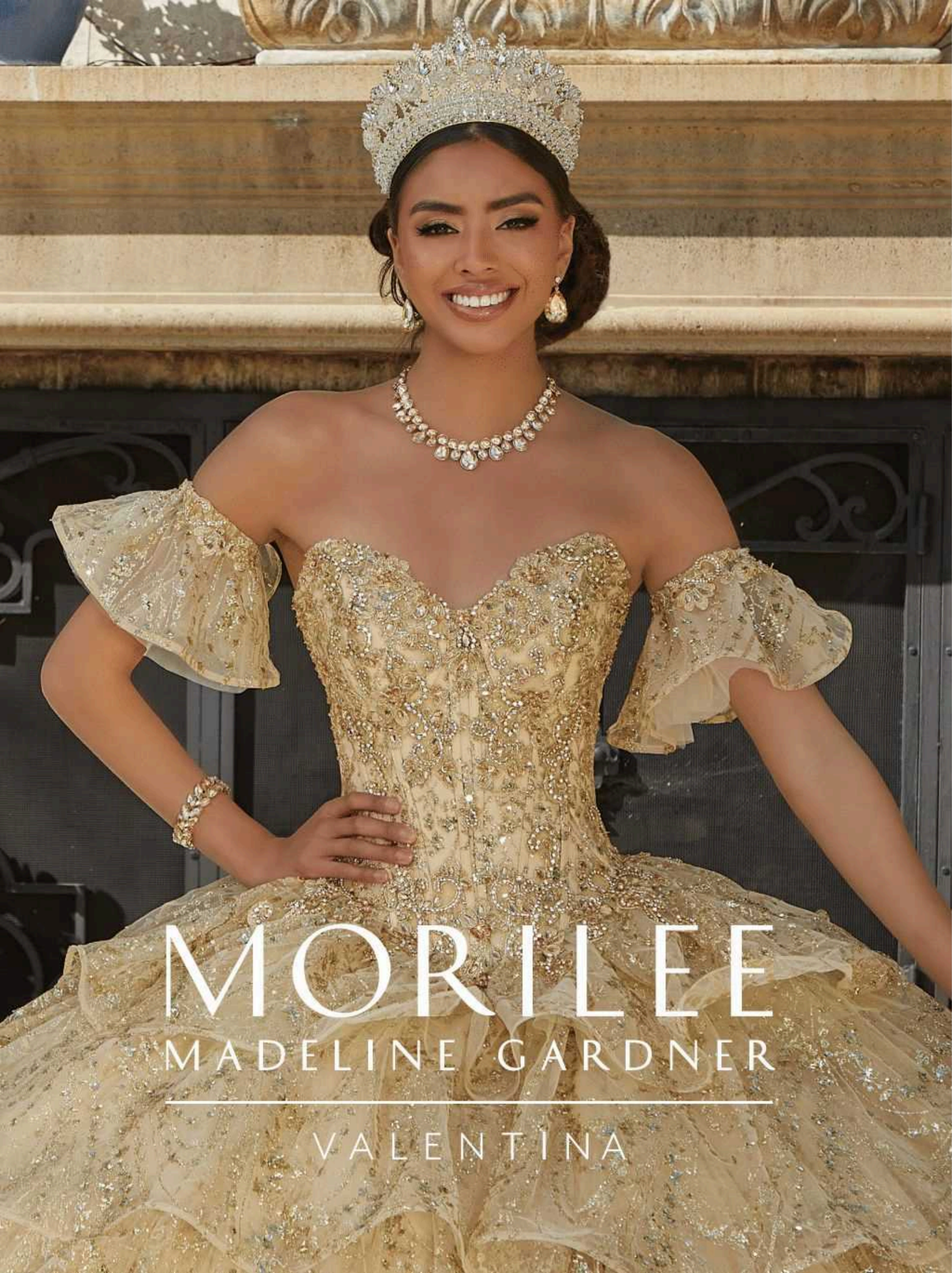


34104

Contrasting Floral Beading
Design with Rhinestone Trim
on a Sparkle Tulle Ball Gown with
Horsehair Edged Skirt
Overlay and Detachable Long Sleeves
Matching Stole

Colors:
Black/Multi






MORILEE
 MADELINE GARDNER
 VALENTINA

34011

Crystal Beading on an Allover Floral Embroidery Pattern on a Tulle Ball Gown with Three-Dimensional, Floral Lace Appliqués and Detachable, Off-the-Shoulder Sleeves
 Matching Stole
 Removable Beaded Spaghetti Straps (Not Shown)

 Light Blue/
 Champagne



34025

Three-Dimensional, Crystal Beaded Lace on a Princess Tulle Over Glitter Tulle Ball Gown with Lace Trimmed Neckline Flounce and Hemline
 Matching Stole

 Scarlet
 Orchid
 White



34042

Rhinestone and Crystal Beaded, Glitter Embroidery on a Patterned Caviar Glitter Net Ball Gown with Scalloped, Princess Skirt
 Matching Stole

 Black/Silver



34051



Rhinestone and Crystal Beaded, Embroidered Appliqués on a Patterned Glitter Tulle Ball Gown with Flounced Overskirt and Off-the-Shoulder Sleeves
 Matching Stole

 French Blue
 Champagne/
 Rose Gold
 Ivory



34054

Rhinestone and Crystal Beaded Embroidery Mixed with Three-Dimensional Floral Appliqués on a Tulle Over Metallic Printed Tulle Ball Gown with Draped Satin Bodice Detail
 Matching Stole

 Champagne/
 Gold
 Ivory



34055

Rhinestone and Crystal Beaded, Embroidered Lace Appliqués on a Box-Pleated, Lace Trimmed Hi-Low Skirt with Detachable Patterned Glitter Tulle Ball Gown Skirt
 Detachable Stole

 Light Blue/
 Silver
 Champagne/
 Gold
 Ivory/Silver



34061

Jeweled Beading on Embroidered Appliqués with Three-Dimensional Embroidered Flowers and Long Sleeves on a Tulle over Glitter Net Ball Gown

-  Orchid
-  Blush
-  Aqua



34062

Crystal Beading on Embroidered Medallion Appliqués on a Shimmering, Larissa Satin Ball Gown

-  Purple/Gold
-  Blush/Gold



34063

Crystal Beaded Embroidery with Hand-Cut Three-Dimensional Flowers On a Tulle Ball Gown over Floral Patterned Glitter Net Matching Shawl

-  Champagne/Gold
-  Light Purple



34064

Metallic Embroidered Appliqués with Jeweled Beading on a Tulle Over Metallic Glitter Net Ball Gown Matching Shawl

-  Champagne/Gold
-  Emerald/Gold
-  Light Blue/Gold



34071

Crystal Beading on a Scalloped, Embroidered Tulle Over Sparkle Tulle Ball Gown with Detachable Train Matching Stole

-  Blush



34075

Crystal Beading and Three-Dimensional Floral Appliqués on a Floral Patterned, Sequined Glitter Tulle Ball Gown Matching Stole

-  Black/Gold
-  Scarlet



34081



Rhinestone and Crystal Beaded, Three-Dimensional Floral Lace Appliqués on a Tulle Over Sparkle Tulle Ball Gown with Flower Skirt and Detachable Off-the-Shoulder Sleeves and Matching Beaded Tulle Gloves

-  Wild Berry
-  Champagne/Blush



34082

Rhinestone and Crystal Beaded Metallic Embroidery on a Floral Patterned Glitter Tulle Ball Gown with Feather Skirt and Matching Gloves

-  Iced Champagne
-  Blush



34083

Crystal Beaded Lace Appliqués on a Patterned Glitter Tulle, Box-Pleated Ball Gown with Chandelier Bodice Beading and Detachable Off-the-Shoulder Sleeves Matching Stole

-  Bahama Blue/Silver
-  Blush/Gold



34084

Rhinestone and Crystal Beaded Embroidery with Three-Dimensional Butterflies on a Sparkle Tulle Ball Gown with Detachable Back Bow Matching Stole

-  Aqua
-  Blush/Champagne



34085

Crystal Beaded, Metallic Lace Appliqués on a Patterned Glitter Tulle Over Sparkle Tulle Ball Gown with Detachable Back Bow and Rosette Sleeves Matching Stole

-  Champagne/Gold
-  Sangria/Gold



34086

Crystal Beaded Lace Appliqués on a Tulle Over Sparkle Tulle Ball Gown with Tie-Back Keyhole

-  Sangria/Gold
-  Nude/Gold



34091

Crystal Beaded, Glitter Embroidery on a Tulle Over Sparkle Tulle Ball Gown Matching Stole

-  Pink Champagne
-  Scarlet/Blush
-  Blueberry/Purple



34092



Butterfly Bodice with Rhinestone Beading on a Patterned Sequin and Glitter Tulle Ball Gown with Three-Dimensional Feather Butterflies Matching Stole

-  Orchid
-  French Blue



34093

Patterned Sequins with Crystal Beading on a Tiered, Pleated Tulle and Glitter Tulle Ball Gown with Detachable Off-the-Shoulder Sleeves Matching Stole

-  Blush/Rose Gold
-  Scarlet



34094

Jeweled Beading and Embroidery on a Tiered, Patterned Sequin and Glitter Tulle Ball Gown with Horsehair Edging and Detachable Off-the-Shoulder Sleeves Matching Stole

-  Scarlet
-  Gold



MORILEE
 MADELINE GARDNER
 DAMAS DE VIZCAYA

9443

Lace and Tulle with Beading

- White
- Blush
- Champagne
- Aqua
- Guava
- Bahama Blue
- Light Purple
- Pucker Up Pink



9459

Satin and Organza

- Champagne
- Light Coral
- Lilac
- Light Aqua
- Pink
- Royal
- Lemonade
- Blush
- White



9472

Satin with Beading

- Blush
- Aqua
- Champagne
- Wine
- Emerald
- Navy
- Red
- Royal
- White



9488

Satin with Beading

- Emerald
- Champagne
- Blush
- Navy
- Sangria
- Bahama Blue



9501

Rhinestone and Crystal Beading on Patterned Glitter Mesh

- Rose Gold
- Ivory/Silver
- Purple/Gold
- French Blue
- Champagne/Gold
- Orchid



9502

Satin with Neckline Flounce and Crystal Beaded Waistband

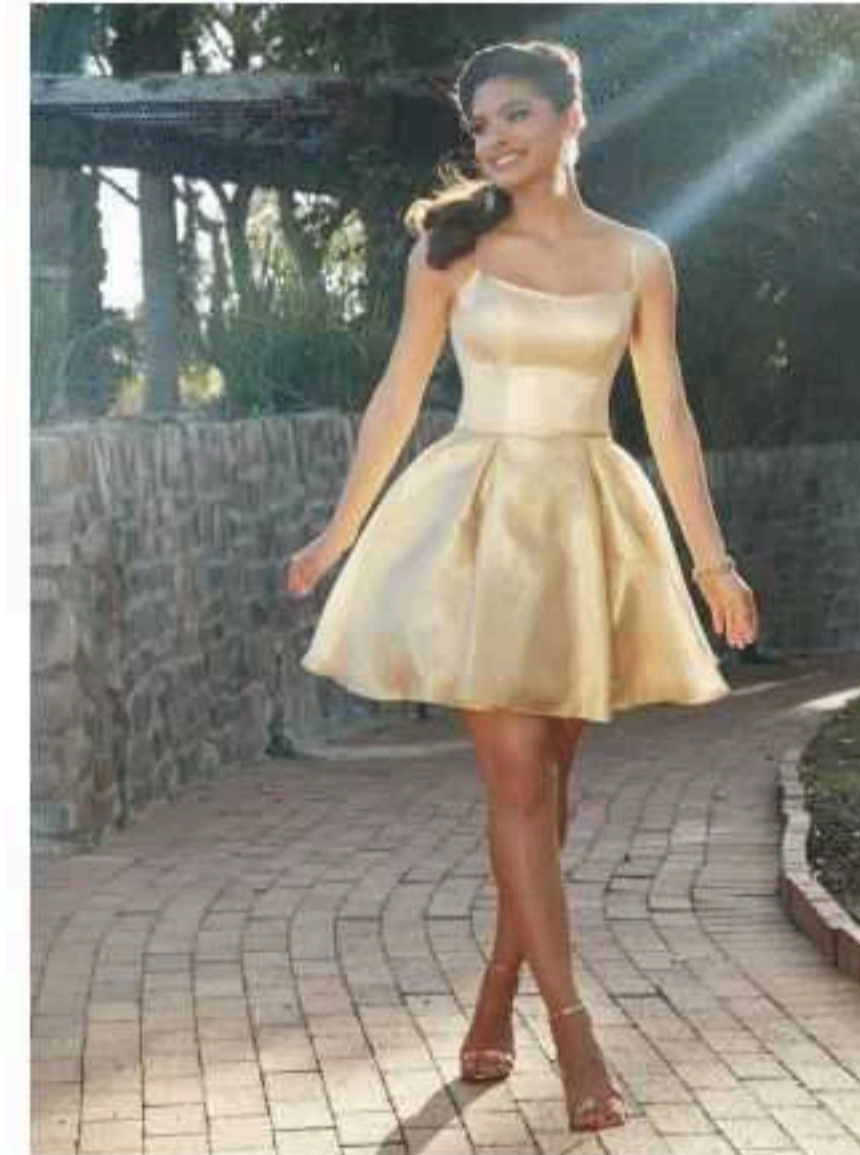
- Buttercup
- Blush
- Champagne
- Scarlet
- Navy
- Emerald



9511

Shimmer Taffeta

- Gold
- Silver



9515

Crystal Beading on Lace Appliqués on Tulle

- Bahama Blue
- Blush
- Champagne
- Light Purple
- White
- Black



9516

Satin and Tulle

- Blush
- Sangria
- Bahama Blue
- Scarlet
- Royal
- Navy
- Black
- White



9532

Crystal Beaded Straps on Organza

- Pink
- Champagne
- Blush
- White
- Light Aqua
- Lilac



9535

Crystal Beading on Tulle Over Glitter Tulle

- French Blue
- Blush
- Scarlet
- Regal Royal
- Orchid
- White



9551

Three-Dimensional Floral Appliqués on a Tulle Over Sparkle Tulle Skirt with Satin Bodice

- Blush
- Regal Royal
- Champagne
- Scarlet
- Orchid
- Bahama Blue



9 5 5 3

Tulle

-  Red
-  French Blue
-  Blush
-  Navy
-  Champagne
-  Sangria



9 5 6 4

Pearl and Crystal Beading on Patterned Glitter Net with Three-Dimensional Floral Appliqués

-  Orchid
-  Rose Gold
-  Ivory/Silver
-  French Blue
-  Champagne/Gold
-  Purple/Gold



9 5 7 3









Patterned Sequins on Tulle

-  Champagne/Gold
-  Blush/Rose Gold
-  Sangria
-  Regal Royal



9 5 7 4

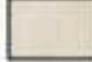
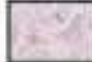

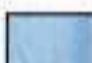


Organza with Beaded Straps and Trim

-  Champagne
-  Bordeaux
-  Red
-  Lilac
-  Blush
-  Emerald
-  Black
-  White



9 5 7 5

Satin and Tulle with Beaded Lace Appliqués

-  Champagne
-  Light Purple
-  Scarlet
-  French Blue
-  Blush
-  White



9 5 7 7

Two-Piece, Beaded Lace on Net Bodice with Tulle Skirt

-  Blush
-  Bahama Blue
-  Champagne
-  Orchid
-  Scarlet
-  Navy
-  White



9 5 7 9

Patterned Glitter Net with Beaded Trim

-  Orchid
-  French Blue
-  Champagne/Gold
-  Ivory/Silver
-  Purple/Gold
-  Rose Gold



9 5 8 3






Jeweled Beaded Edging on Glitter Patterned Tulle with Sequined Beading

-  Bahama Blue
-  Emerald
-  Rose Gold



9 5 8 4

Beaded Lace and Three-Dimensional Appliqués on a One-Shoulder Bodice with Tulle Skirt Over Glitter Net Skirt

-  Lipstick
-  French Blue
-  Navy
-  Blush
-  Scarlet



9 5 8 9




Crystal Beaded Lace Appliqués on Satin with Trimmed Accent Pockets and Lace Shoulder Straps

-  French Blue
-  Orchid
-  Champagne
-  White
-  Blush
-  Aqua
-  Scarlet



9 5 9 1

Patterned Glitter Tulle with Satin Tie Bow

-  Blush/Rose Gold
-  French Blue
-  Emerald



9 5 9 2

Tulle Over Sparkle Tulle with Detachable Bow Sleeves

-  Orchid
-  Blush
-  Red
-  French Blue
-  Sangria
-  White



9593

Beaded Lace Appliqués on Organza

-  Blush
-  Orchid
-  Emerald
-  Red
-  Champagne
-  Regal Royal



9594




Beading on Sparkle Tulle with Feather Sleeves

-  Blush
-  Black
-  French Blue
-  Scarlet
-  White



9596

Patterned Glitter Tulle with Detachable Puff Sleeves

-  Emerald
-  French Blue
-  Blush/Rose Gold



9599

Glitter Tulle Over Sparkle Tulle with Detachable Shoulder Bow

-  Sangria
-  Navy
-  Champagne/Gold
-  Blush
-  Light Blue
-  Emerald
-  White



9600

Beaded, Three-Dimensional Floral Appliqués on Lace Bodice with Glitter Tulle Skirt with Light Up Detail

-  Scarlet
-  Champagne/Blush
-  Blue
-  Navy
-  Emerald
-  Sangria
-  White



9611

Patterned Glitter Net with Satin Tie Back

-  French Blue
-  Blush/Rose Gold
-  Emerald



9612




Satin with Beaded Neckline Trim and Detachable Puff Sleeves

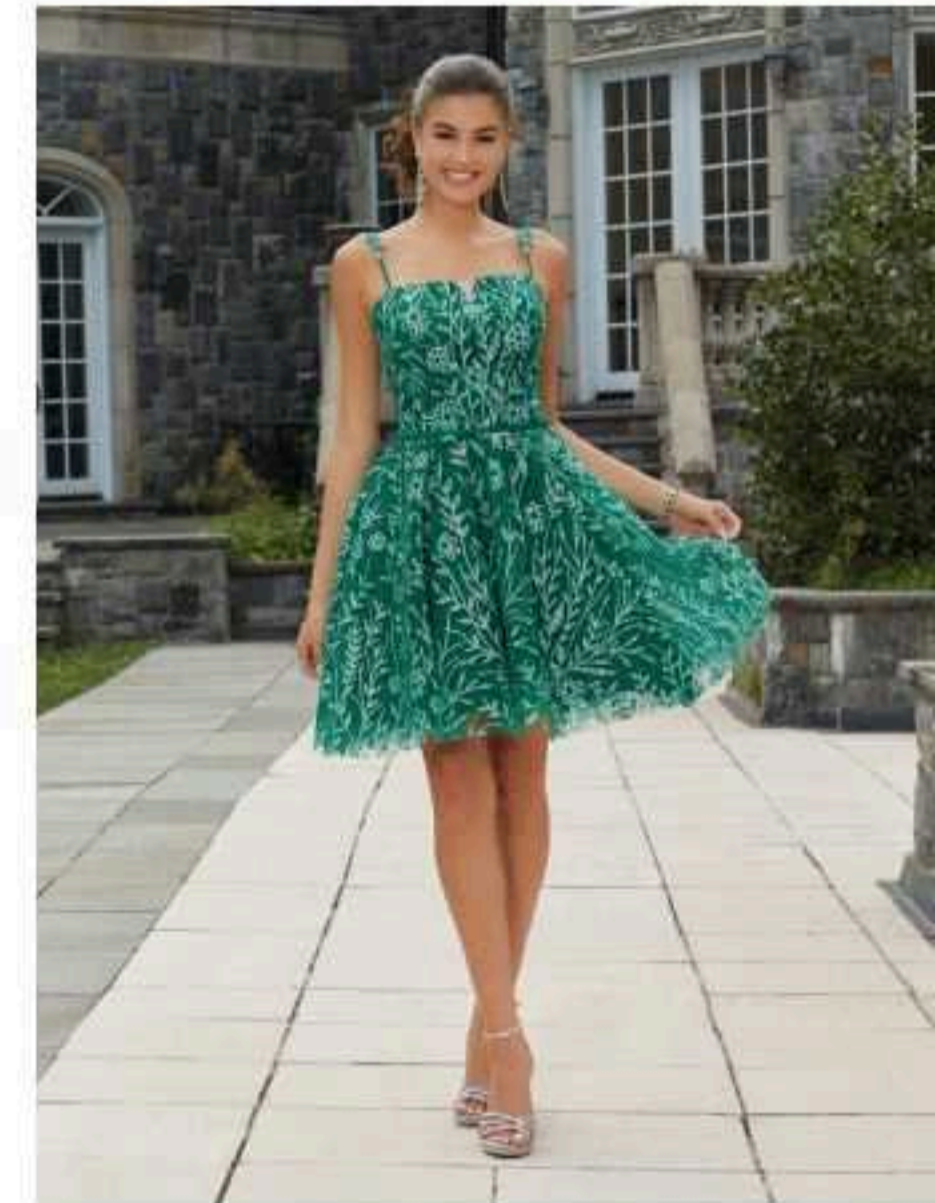
-  French Blue
-  Sangria
-  Blossom
-  Emerald
-  Orchid
-  Scarlet
-  White



9613

Floral Patterned Glitter Tulle with Tie Back

-  Emerald
-  French Blue
-  Blush



9614

Glitter Embroidery on Sparkle Tulle

-  Emerald
-  Champagne/Gold
-  Sangria/Gold
-  Orchid



9615

Satin

-  Yellow
-  French Blue
-  Blush
-  Scarlet
-  Emerald
-  Blossom
-  Navy
-  Black
-  White



9616

Three-Dimensional Floral Appliqués and Beaded Waist Trim on Sparkle Tulle with Detachable Off-the-Shoulder Sleeves

-  Bahama Blue
-  Champagne
-  Sangria
-  Orchid
-  Scarlet
-  Sage
-  White



9617

Satin with Beaded Trim

-  Scarlet
-  Royal
-  Navy
-  Sangria
-  Emerald
-  Blossom
-  White
-  Black



ACCESSORIES

9618

Beaded Trim on Sparkle Tulle

- Sangria
- Orchid
- Emerald
- Blush
- Champagne
- Sage
- White



9619

Sparkle Tulle with Three-Dimensional Flowers

- Navy
- Sangria
- Blush
- Emerald
- Pucker Up Pink
- French Blue
- Scarlet



89201

Beaded, Patterned Glitter Mesh Cape

- Rose Gold
- Ivory/Silver
- Purple/Gold
- French Blue
- Champagne/Gold
- Orchid



89299

Detachable Patterned Glitter Net Cape

- Black
- Rose Gold



89326

Patterned Glitter Net Cape with Ruffle Detail

- Blush/Rose Gold
- Silver
- Gold
- Wine




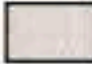
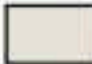
89327

Patterned Glitter Net Cape with Ruffle Detail

-  Silver
-  Orchid
-  Red
-  Ivory

89348

Feather Edging on a Crystalized Tulle Cape

-  Lilac
-  Blush
-  Pearl



MORILEE
 MADELINE GARDNER
 VIZCAYA



MORILEE
 MADELINE GARDNER
 VIZCAYA



89367

Crystal Beaded Lace Appliqués on a Sparkle Tulle Cape

- Scarlet
- Regal Royal
- Blush
- White

89368

Lace Appliqués on a Floral Patterned Glitter Tulle Cape with Light Up Detail

- Champagne/Gold
- Scarlet
- Emerald
- Regal Royal
- French Blue
- Orchid



MORILEE
 MADELINE GARDNER
 VIZCAYA



MORILEE
 MADELINE GARDNER
 VIZCAYA



89369

Rhinestone and Crystal Beaded, Sparkle Embroidery on
 Glitter Tulle Cape Overlay

- Sangria
- Orchid

89370

Beaded, Three-Dimensional Floral Appliqués on a
 Glitter Tulle Cape

- Emerald
- Bubble
- Light Purple
- Sangria
- Scarlet
- Regal Royal
- Blush
- Light Blue



MORILEE
 MADELINE GARDNER
 VIZCAYA



89371

Floral Patterned Glitter Tulle Cape

- Light Purple
- Regal Royal
- Emerald
- Champagne/Gold
- Scarlet
- French Blue



89405 T

*Crystal Beaded, Contrasting
 Floral Embroidery on a
 Patterned Glitter Train
 Matching Style 89405*

- Light Blue
- Blush
- Orchid



MORILEE
 MADELINE GARDNER
 VIZCAYA



89417

Ruffled Tulle Overskirt

- French Blue
- Orchid
- Blush
- Emerald
- Scarlet
- Regal Royal

89418

*Floral Patterned Glitter Tulle Cape with
 Three-Dimensional Butterflies*

- Emerald
- Sangria

89419

Beaded Tulle Gloves

- Sangria
- French Blue
- Orchid
- Blush
- Emerald
- Scarlet
- Champagne
- Black
- White



MORILEE

MADELINE GARDNER

VIZCAYA



89239

Stretch, Basque Waist Net Petticoat
Available in Small, Medium, Large

Color: White

@morileequince

www.morilee.com